

# Banksia House

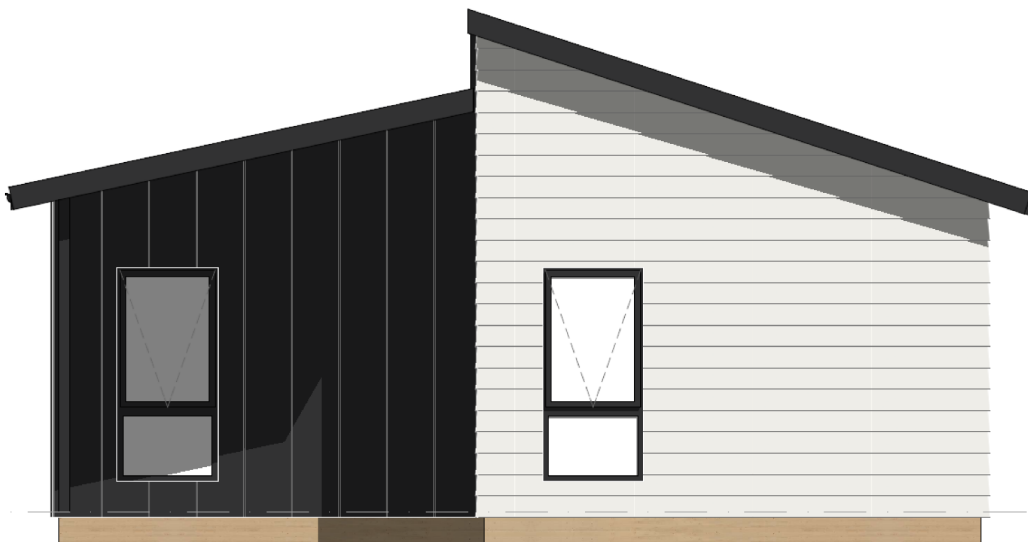
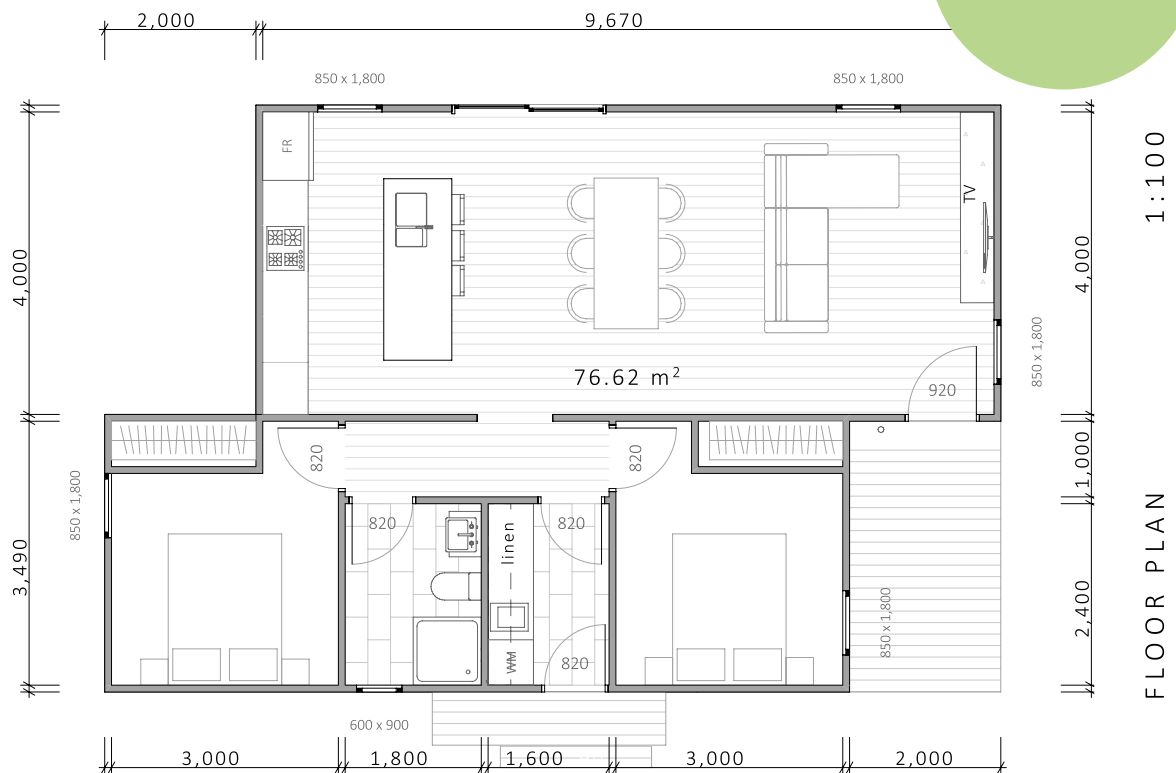
2 Bed | 1 Bath | Area 77m<sup>2</sup>

Buildwise.  
HOBART

This two-bedroom coastal home embraces open-plan living, with a long kitchen, dining, and lounge area designed to capture scenic views. Spacious bedrooms and a walk-through laundry enhance functionality, while the vertical batten and weatherboard exterior create a timeless coastal charm.



AVAILABLE  
SOON



## Standard Inclusions Baskia House

### SITE WORKS & EXTERNAL

- All plans allow for 900mm of fall across the building envelope.
- Fully engineered Pier and post footings to take engineer designed suspended timber floor system on 89 x 3.5mm SHS posts.
- (90x35) MGP10 Pine frame to comply with the Australian Building Code.
- Treated pine Drainage cavity batten to all cladding in accordance with the national construction code.
- Double glazed aluminium windows and doors.
- Hume Timber finish Entrance Door, SPM Vacluse Premier XV18 or equivalent within aluminium frame. Entry door fitted with Gainsborough Trilock Contemporary series.
- Combination of James Hardies Primeline -Chamfer weather boards and James Hardies Easylap with 42 x 19 Design Pine batten over at 400mm centres paint finished.
- Spoil to remain on site and shaped to landscape.
- Electrical Mains to 20m run length.
- 40 meters of sewer drains and 45 meters of stormwater drains.

### INTERNAL

- Standard 10mm plasterboard to all internal walls, wet area plasterboard to bathroom and Laundry with 55mm Cornice throughout.
- 2400mm high internal ceiling height throughout.
- R5.0 insulation to ceilings, High density R2.5 Batts to all external walls and High-density R 2.5 Batts to floor system.
- Redicote internal doors (Paint finish).
- Gainsborough G4 Series Amelia Passage lever sets to doors with privacy locks to bathrooms and toilets.

- 67 x 18mm Square Dressed MDF Skirting Boards and 42 x 18mm Square Dressed MDF Architraves, paint finish.
- Full height Hafele soft close Robe doors in polytec standard range colour choice with white melamine cabinetry one full height hanging rail with one 600mm wide set of four draws and open shelves above with 1800mm high shelf above to each bedroom. Note, Master bedrooms have 2 sets of 600mm wide stack of draws and open shelves.
- Select carpet form our Locomotion range on 10mm Dunlop underlay to bedrooms. Engineered floating floor to Kitchen, Dining, Living and Hallway/Laundry.
- Tiles to bathroom floors and Skirting tiles including wall tiles to shower up to 2000mm above floor. Tiles to \$40.00 a square meter.
- Subway tiled splashback to the kitchen and laundry or Reflections Aluminium splashback.
- 900mm square Polymarble shower base with frameless glass shower screen.
- Wave 750mm wall Hung Vanity with stone top, Eden bench mount basin (Gloss White) With Spin Tall basin mixer.
- Hafele Oven, Dishwasher, 600mm Cooktop and Rangehood.
- Polytec laminate 40mm thick with tight form edge Kitchen benchtop with Polytec Melamine board door and draw fronts with softclose draws and doors. Colours TBC. Laundry in Polytec Melamine board with Polytec laminate 40mm thick with tight form edge benchtop. Colours TBC.

### OPTIONAL

- Raked ceiling to living area (POA).
- Deck to front and side entry entry (POA).