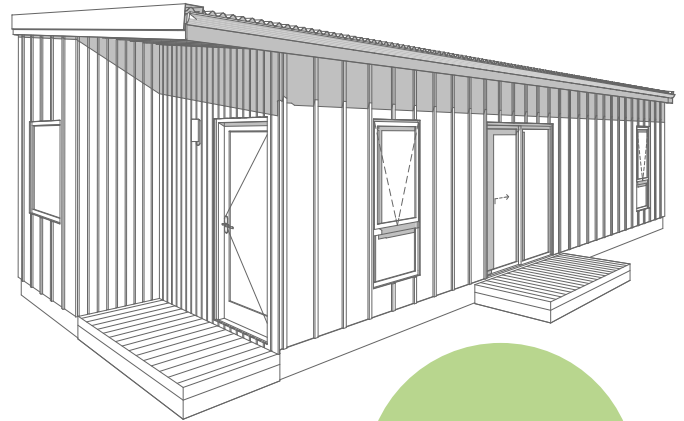


Wattle House

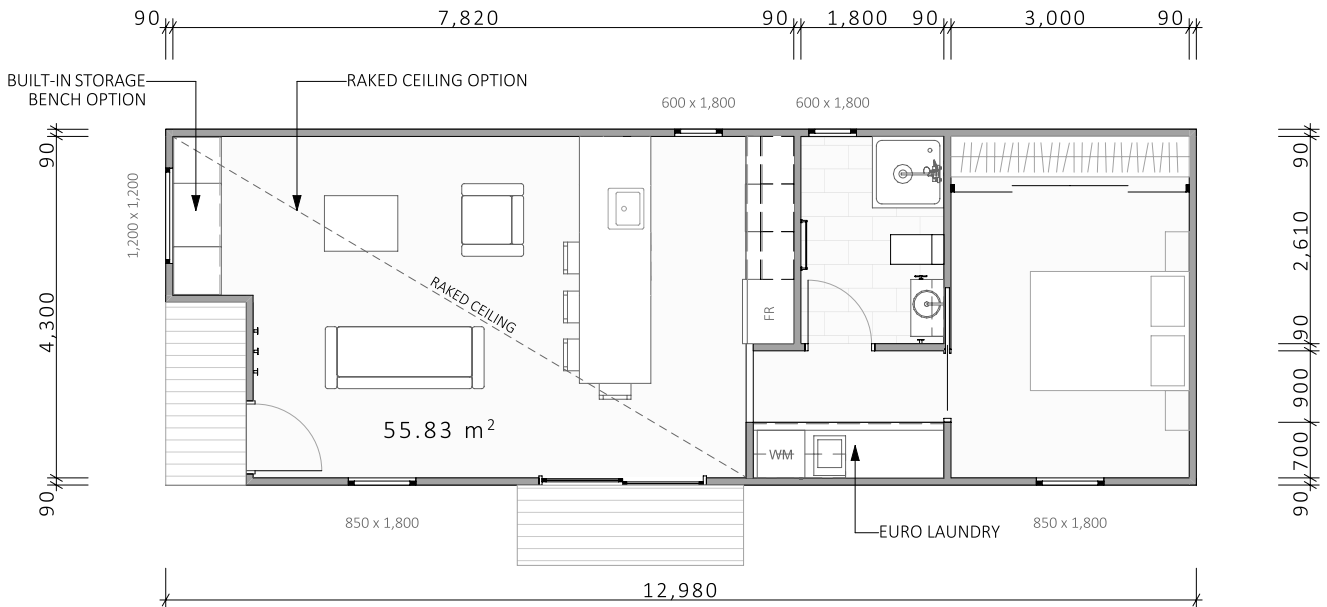
1 Bed | 1 Bath | Area 56m²

Buildwise.
HOBART

This one-bedroom ancillary dwelling is designed for versatility. Ideal for an older parent, a studio, or an Airbnb unit. Generous proportions create a spacious feel, complemented by built-in storage, a large island for dining, and a Euro laundry for convenience. Every element is thoughtfully designed to maximise comfort in a compact footprint.



FROM
\$186,340



FLOOR PLAN

1:100



Standard Inclusions Wattle House

SITE WORKS & EXTERNAL

- All plans allow for 1m of fall across the building envelope.
- Fully engineered Pier and post footings to take engineer designed suspended timber floor system on 89 x 3.5mm SHS posts.
- (90x35) MGP10 Pine frame to comply with the Australian Building Code.
- Treated pine Drainage cavity batten to all cladding in accordance with the national construction code.
- Double glazed aluminium windows and doors.
- Hume Timber finish Entrance Door, SPM Vacluse Premier XV18 or equivalent within aluminium frame. Entry door fitted with Gainsborough Trilock Contemporary series.
- James Hardies Scyon Axon 133mm wide groove cladding paint finished with Shadowclad Natural wide groove clear finish feature wall.
- Spoil to remain on site.
- Electrical Mains to 20m run length.
- 40 meters of sewer drains and 45 meters of stormwater drains.

INTERNAL

- Standard 10mm plasterboard to all internal walls, wet area plasterboard to bathroom and Laundry with 55mm Cornice throughout.
- 2400mm high internal ceiling height throughout.
- R5.0 insulation to ceilings, High density R2.5 Batts to all external walls and High-density R 2.5 Batts to floor system.
- Redicote internal doors (Paint finish).
- Gainsborough G4 Series Amelia Passage lever sets to doors with privacy locks to bathrooms and toilets.
- 67 x 18mm Square Dressed MDF Skirting Boards and 42 x 18mm Square Dressed MDF Architraves, paint finish.
- Full height Hafele soft close Robe doors in melamine range colour choice with white melamine cabinetry two full height hanging rail with two half height hanging spaces and two 600mm wide set of four draws and open shelves above with 1800mm high shelf above.
- Select carpet from our Locomotion range on 10mm Dunlop underlay to bedrooms. Engineered floating floor to Kitchen, Dining, Living and Hallway/Laundry.
- Tiles to bathroom floors and Skirting tiles including wall tiles to shower up to 2000mm above floor. Tiles to \$40.00 a square meter.
- Subway tiled splashback to the kitchen and laundry or Reflections Aluminium splashback.
- 900mm square Polymarble shower base with frameless glass shower screen.
- Wave 750mm wall Hung Vanity with stone top, Eden bench mount basin (Gloss White) With Spin Tall basin mixer.
- Hafele Oven, Dishwasher, 600mm Cooktop and Rangehood.
- Polytec Kitchen with softclose draws and doors. TBC